

Liberton & District Community Council Survey Report 2016

Aim

As stated in Section 51 (2) of the Local Government (Scotland) Act 1973, the purpose of Community Councils is: *'to ascertain, co-ordinate and express to the local authorities for its area, and to public authorities, the views of the community which it represents ..'*

The Liberton & District Community Council (L&DCC) decided to fulfil this purpose by designing and implementing a survey that was distributed to all households in their area. The survey (Appendix I) asked households to indicate what priorities are important to them and to rank these selected priorities in order of importance. Opportunities were also given to provide additional suggestions.

Method

The survey distributed to households in the L&DCC area is provided in Appendix I.

The survey was distributed to all households in the L&DCC area, requesting return via Freepost. A deadline was stated on the survey cards but surveys received after this date were also included in the data analysis. An online version of the survey has been created and continues to be available at: <https://www.surveymonkey.co.uk/r/6YHWPVS>

All returned surveys were electronically scanned and then manually inputted into a Microsoft Excel spreadsheet. Personal information received included the postcode of the household as well as the ages of the people present in each household. In order to determine if the community priorities differ depending on the different districts of the L&DCC area, 10 distinct districts were identified (Figure 1). The priorities for each of these regions was investigated as well as the priorities for the whole L&DCC area.

Initially the raw data of the survey were entered into an Excel spreadsheet. As respondents were asked to rank their household's priorities, each response was given a weighted score to take account of the ranking given to an item. A first priority was counted as 1, second as $\frac{1}{2}$, a third as $\frac{1}{3}$, and so on. Adding the weighted scores for a particular item allowed the responses to be aggregated in terms of perceived importance. When respondents bracketed two or more items as equal, this was reflected in the scores. For example, when two items were seen as equal after a first priority, these were both scored $\frac{5}{12}$ (i.e. $\frac{1}{2} + \frac{1}{3}$ divided by 2) and the next item was scored as $\frac{1}{4}$.

Respondents had space on the survey to provide additional comments and these comments could be included in the ranking. For the data analysis, if the additional comment could be included in one of the priorities included in the survey then it was included at that point. If the additional comment could not be included as one of the survey priorities it could not be included in the overall data analysis. However, all additional suggestions that could not be included were investigated separately and are included in Results Section 5.

Data input and analysis was performed in Microsoft Excel. Graphs were produced using GraphPad Prism 7.

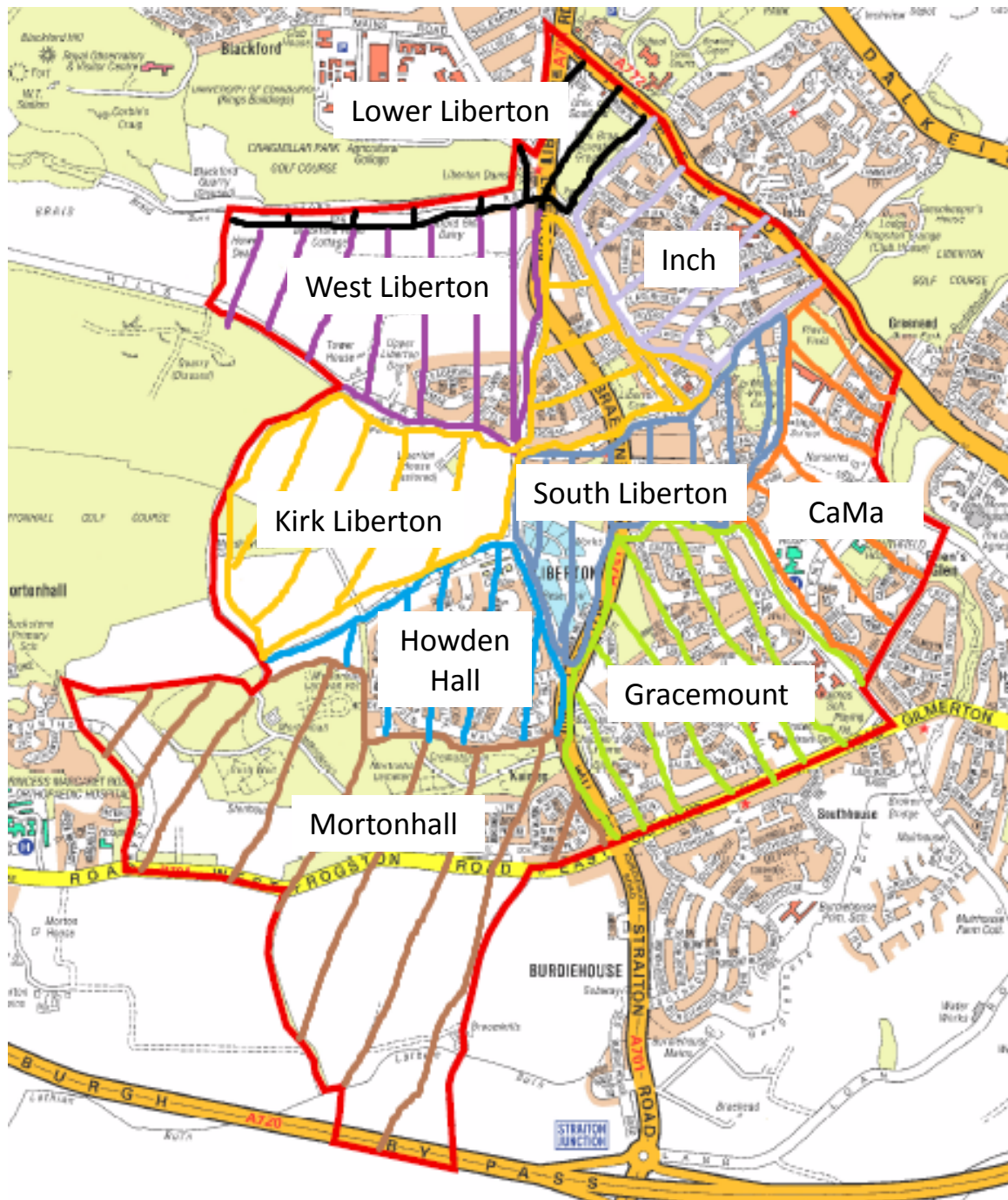


Figure 1. Map of the L&DCC Area split into 10 districts. 10 districts are identified and labelled. CaMa stands for Carnbee/Marbet/Guardwell. All households within the L&DCC area received surveys that could be returned via Freepost.

Results

1. Demographic Data

452 surveys were returned representing 7.2 % of the total households within the L&DCC area; an increase on 1.4 % of households that returned a survey in 2010. The percentage of households that returned surveys in each district is shown in Figure 2A. Table 1 outlines the number of houses in each district and the percentage of returned surveys. After identifying the number of households in each district it was decided to group the 4 Liberton districts – Lower Liberton, West Liberton, South Liberton, and Kirk Liberton - into one larger district called Liberton. This decision was made both on the demographic location of these districts as well as the number of households present in this combined district. Of the 6 remaining districts, Mortonhall contains the smallest number of households – 355. It was decided to leave this district on its own because it did not make geographical sense to group this district with another district as it is very much a distinct housing area.

The highest returning district was Liberton with 12.3 % of households returning the survey. The lowest returning district was Gracemount with 2.9 % of households returning the survey. No attempt was made to investigate why different response rates were achieved from different areas, but we were disappointed in the response from Gracemount and the Inch where needs may be greatest according to the SIMD scoring provided at <http://www.gov.scot/Topics/Statistics/SIMD/SIMDInteractive>. To ensure that one district was not biasing the results, the analysis was performed for the individual district areas as well as the whole L&DCC area.

The age of the people present in each responding household was also collected. The age of the respondents was normally distributed suggesting that there was no bias towards a particular age group with all age categories covered in the responses (Figure 2B).

District	Number of Households	Number of Surveys Returned	Responses (%)
Gracemount	1535	44	2.9
Inch	1201	40	3.3
CaMa	829	47	5.7
Howden Hall	845	58	6.9
Mortonhall	355	34	9.6
Liberton	1544	190	12.3
Total	6309	452	7.2
Lower Liberton	253	18	7.1
West Liberton	149	11	7.4
South Liberton	650	80	12.3
Kirk Liberton	492	81	16.5

Table 1. Number of Households in each District and the Number of Surveys Returned.

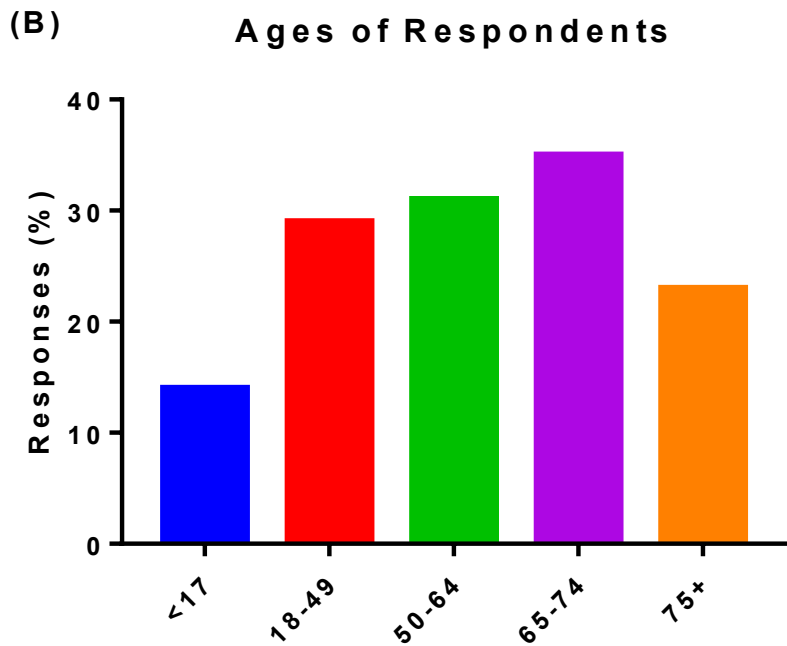
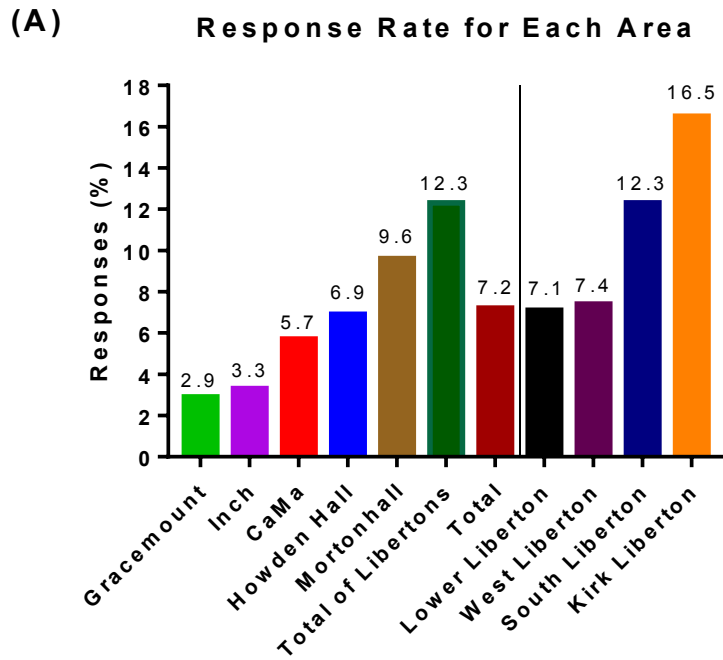


Figure 2. Demographic Analysis of the Survey Responses. (A) Number of surveys returned from each district. The Liberton districts are displayed both separately and combined. The numbers represent the percentage of surveys returned. (B) Ages of respondents.

2. Priority Data

The following 10 Community Priorities were selected for the survey (abbreviations used on the graphs are shown in brackets):

- Increased social opportunities for people over 65 (>65)
- Increased opportunities for youth to engage positively (Youths)
- Increased awareness about domestic abuse (Abuse)
- Increased support for parents (Parents)
- Do more in community gardens/parks/'green' activities (Green Spaces)
- Hold an annual Gala or Community Day for all to enjoy (Gala Day)
- More direct bus routes to places around the city boundary (Bus Routes)
- Cycling – good links, more cycle ways, road safety for all (Cycle)
- Conditions of roads, pavement, traffic levels, crossings (Roads/Pavements)
- Development of suitable/affordable housing to buy/rent (Housing)

Initially the raw data was analysed by counting the number of households that had ticked particular priorities (Figure 3A). It was immediately apparent that a majority of households (91 %) has the 'Conditions of roads, pavements, traffic levels, and crossings' as a priority. The second highest priority (58 % of households) was to 'do more in community gardens/parks/'green' activities'.

The lowest priority in terms of counts (25 % of households) was providing 'Increased support for parents'. The second lowest priority (27 %) was 'Increase awareness about domestic abuse'.

Due to the high response to the priority to improve the 'Conditions of roads, pavements, traffic levels, and crossings' this data has not been included in subsequent graphs as it would have been off-scale on graphs designed to show the differences between the opinions on the other priorities. However, it is good to bear in mind that in every district this priority was of highest concern.

3. Ranked Data

As noted earlier, households were asked to rank the relative priority of items they had ticked. This enabled us to weight the perceived importance of each stated household priority. Figure 3B shows the relative scores. Again 'Conditions of roads, pavements, traffic levels, and crossings' was the highest priority; it would have been off-scale with a score of over 35 000.

The overall pattern of the priorities is highly similar to the Count data suggesting that overall, the priorities that were stated most frequently were the same as the priorities that people have linked with the highest levels of importance. The main difference is that the priority to 'Develop suitable/affordable housing to buy/rent' is now of more importance than 'Increased social opportunities for people over 65'.

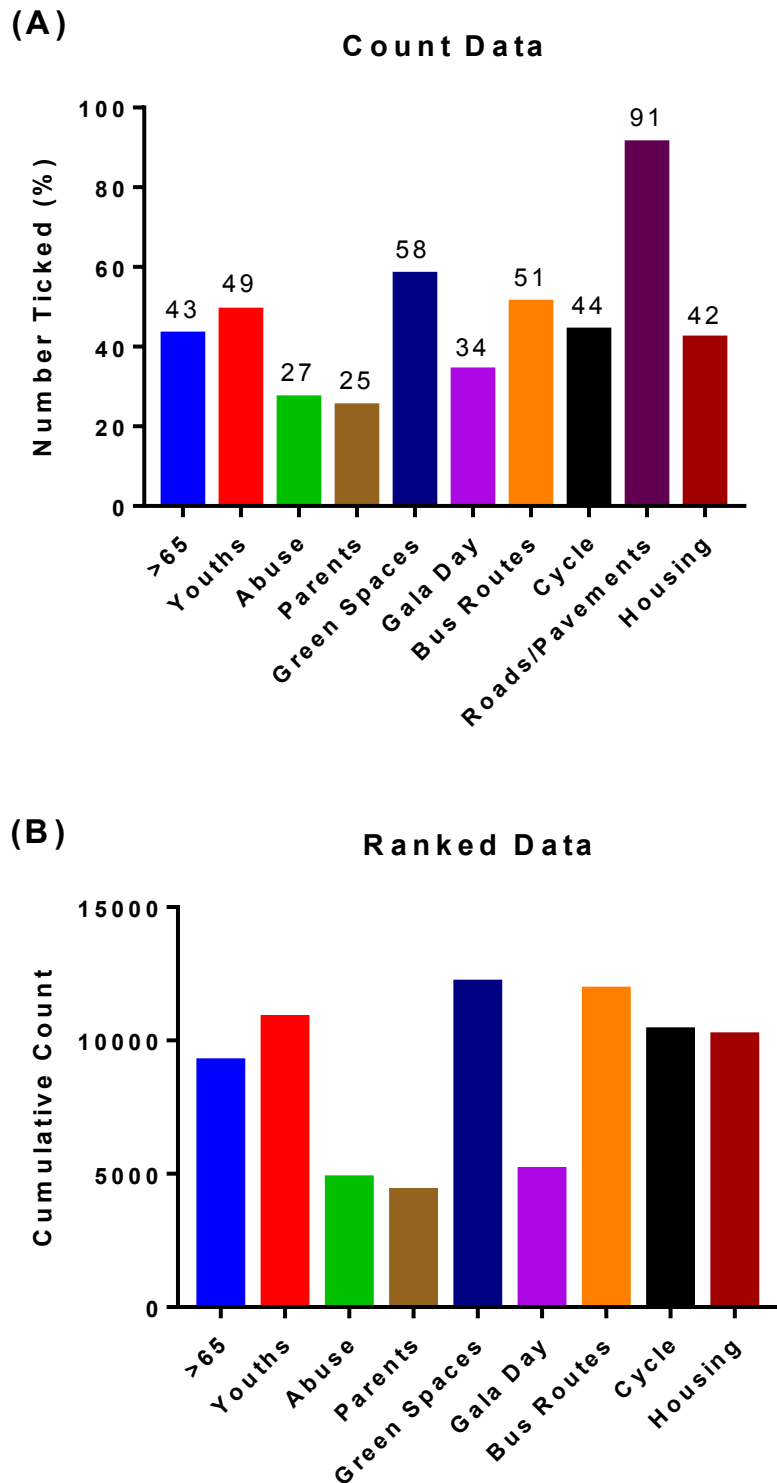


Figure 3. Overall Survey Results. (A) Count Data produced from adding together every time a household ticked each particular survey priority. **(B)** Ranked Data produced from the importance or ranking that each survey priority received. The numbers are so large because each rank was multiplied by 120 (divisible by all numbers below 10 except 7 and 9).

4. Results for Specific Areas

The ranked survey results were also investigated in terms of each district (Figure 4). In general the same trends were identified for each district with the three least important categories being 'Increased awareness about domestic abuse', 'Increased support for parents', and 'Hold an annual Gala or Community Day for all to enjoy'. In general these three categories would be distinct from the others. This is not the case for Howden Hall in which 'Do more in community gardens/parks/'green' activities' has a similar low level of importance.

As already stated the most important priority did not differ between districts and was consistently stated as 'Conditions of roads, pavements, traffic levels, and crossings'. This data is not displayed on the graphs as it prevented close analysis of the other priorities.

The second most important priority did differ between districts but consisted of either: 'More direct bus routes to places around the city boundary', 'Development of suitable/affordable housing to buy/rent', and 'Do more in community gardens/parks/'green' activities'. For some districts, namely Mortonhall, Gracemount, CaMa, and Liberton, the second highest priority was distinct from the other priorities whereas in the Howden Hall and Inch districts the second highest priority was of similar importance to at least one other category.

For Howden Hall residents, transport appears to be of high importance and this is in terms of both buses and cycling. The other priorities of high importance are 'Increased social opportunities for people over 65' and 'Increased opportunities for youth to engage positively'.

For Mortonhall residents, the 'Development of suitable/affordable housing to buy/rent' is of high importance. There is also a demand for 'More direct bus routes to places around the city boundary' as well as 'Increased opportunities for youth to engage positively'.

For Gracemount residents it is importance that community gardens and green spaces are used more effectively. Other high importance priorities are, 'Increased opportunities for youth to engage positively' and 'More direct bus routes to places around the city boundary'.

For CaMa residents, having 'More direct bus routes to places around the city boundary' is of high importance. Many priorities ranked consistently for this area and these included: 'Increased social opportunities for people over 65', 'Increased opportunities for youth to engage positively', 'Do more in community gardens/parks/'green' activities' as well as the 'Development of suitable/affordable housing to buy/rent'.

For Inch residents, there are four priorities that stand out: 'Increased social opportunities for people over 65', 'Increased opportunities for youth to engage positively', 'Do more in community gardens/parks/'green' activities' as well as the 'Development of suitable/affordable housing to buy/rent'.

For Liberton residents, a high priority is to 'Do more in community gardens/parks/'green' activities' as well as improving transport links - both cycling and buses.

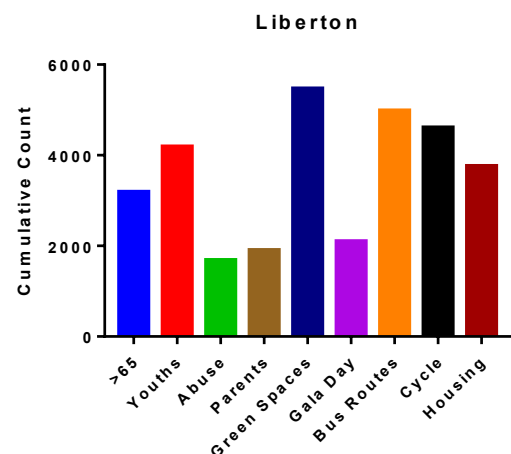
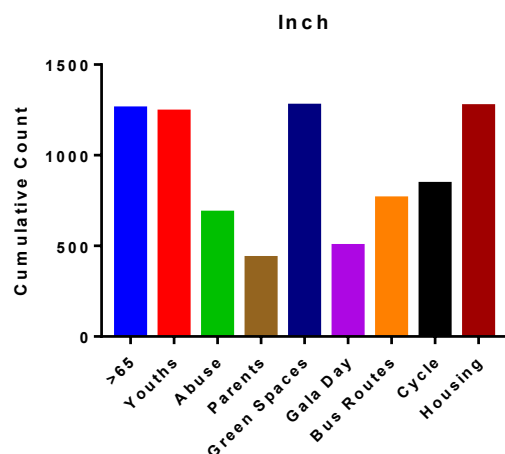
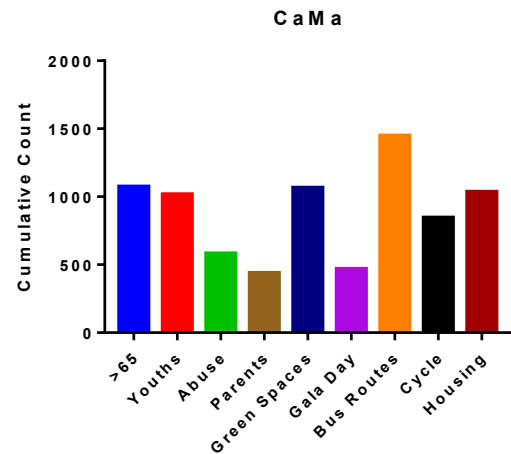
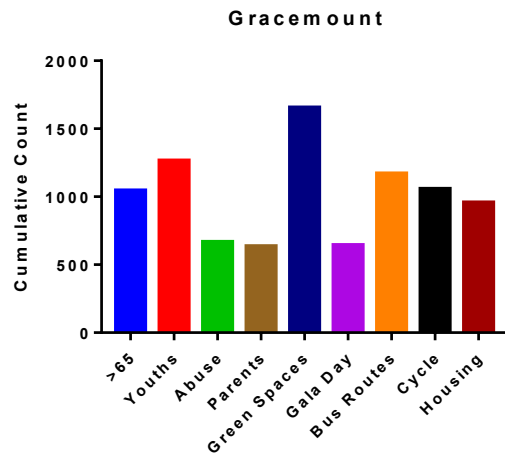
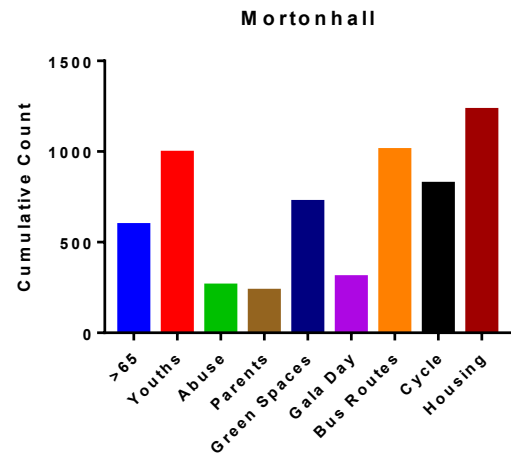
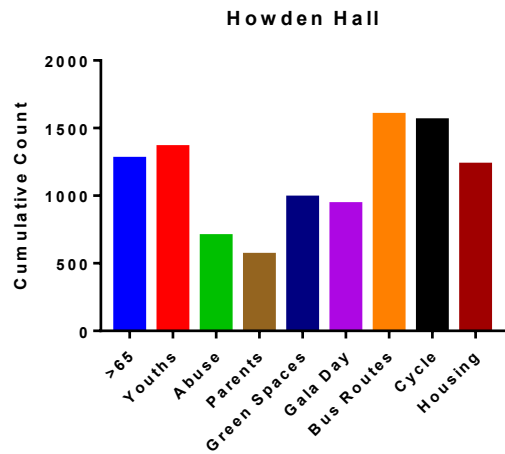


Figure 4. Ranked Survey Results for Each District. The ranked survey results for each district are displayed. For all districts the Roads/Pavements priority was the most important but this has been removed for clarity.

5. Additional Priorities Identified from the Survey

The survey also had an opportunity for suggestions about additional things that are priorities for each particular household. If these comments could be attributed to one of the 10 priorities mentioned on the survey then it was considered as such. Comments that did not fit into the 10 priorities mentioned on the survey could not be included in the data analysis.

From the additional comments 6 themes emerged (Table 2).

Additional Comment	Number of Surveys
Improvements to the bin collections "better bin collection organisation"	14
Increased community Policing "higher police presence in the area"	16
More local amenities – cafes, shops, restaurants "community café/shop"	10
Increased promotion of community events "community website"	5
Increased communication about the L&DCC "increase profile of community council"	2
Improved mental health awareness "mental health services need improvement in many ways"	2

There were also an additional 19 comments that were only made by one household. These included: having increased access to leisure facilities, increased intergenerational activities, ensuring local libraries aren't forced to close, having more schools, support for Inch house, prosecution of cold callers, public external defibrillators, car boot sales, removing graffiti, protesting against the flight paths, increased facilities for the disabled, grants to install solar panels, re-painting of houses, more cash machines, and more parking restrictions for commuters.

6. Comments made that are Linked to the Survey Priorities

Additional comments that were provided and determined to fit within the community priorities stated on the survey are detailed below.

Conditions of Roads, Pavement, Traffic levels, Crossings

88 surveys contained additional comments relating to roads and pavements. 34 households commented on the amount of litter and dog poo present on pavements. 16 households commented about speed limits but there were variations on whether more or less speed limits should be implemented and where. 11 households requested that weeds are removed from pavements. 10 households requested that hedges are trimmed back along pavements. Only 1 household mentioned that there are lots of potholes.

Do more in Community Gardens/Parks/'Green' Activities

22 surveys contained additional comments relating to community gardens. 5 households commented on the amount of litter and the need for community clear ups. 5 households wanted improvements to Liberton Park. 3 households wanted increased education and wildlife protection. 2 households wanted events in green spaces. 2 households mentioned schemes that would help

others – for example gardening for the elderly. 1 household mentioned the requirement for Gracemount allotments.

More Direct Bus Routes to Places around the City Boundary

6 households had additional comments about buses. These comments were: to have bus shelters on Captain's Road, to have better bus services on Sundays on Lasswade Road, to have cycle racks on buses, to have a regular bus from Frogston Road to Firrhill, having a bus across Braids Hill to Morningside, and that the No 18 bus route is not frequent enough.

Increased Opportunities for Youth to Engage Positively

4 households had additional comments about activities for youths. These comments were: more activities for children during the summer holidays, an all-weather playing area for younger children, mentor/work experience schemes for students, more after school clubs and breakfast clubs, and more youth clubs and sports clubs

Cycling – Good Links, More Cycle Ways, Road Safety for All

5 households had additional comments about cycling. These comments were highly variable: not to spend money on underused cycle ways, more cycle paths to allow family cycling, people parking in the cycle lane outside Inch primary school should be penalised, to have cycle racks on buses, and that cyclists should have registration numbers to try and limit dangerous cyclists.

Development of Suitable/Affordable Housing to Buy/Rent

29 households had additional comments about housing. 16 households would like to see campaigning to preserve the green belt. 10 households are concerned about the lack of GP surgeries and schools around new housing developments. 1 household wanted increased resident parking. 1 household wanted parking restrictions to be enforced.

Increased Social Opportunities for People over 65

5 households had additional comments about social opportunities for over 65's. These included: helping the elderly with shopping, having a dance hall, having free access to leisure centres for over 70's, having more sporting opportunities for men over 60, and having a system in place to ensure that the elderly receive information when required, for instance when the water pipes burst.

Hold an Annual Gala or Community Day for all to enjoy

3 households had additional comments about having a gala day. These included: having a community Christmas tree with lighting ceremony, having events where people from different cultures can meet informally and socialise, and using a gala day to raise money for local charities.

Increased Support for Parents

1 household commented about having more baby/toddler community groups.

There were no additional comments that related to 'Increased awareness about domestic abuse'.

Conclusion

The highest priority of the households within the L&DCC area is to 'Improve the conditions of roads, pavements, traffic levels, and crossings'. From the additional comments it appears that the conditions of pavements are a major concern with emphasis made on decreasing litter, decreasing weeds, and cutting back hedges along pavements.

The districts of Gracemount, Inch, and Liberton want green spaces to be used more effectively whereas the districts of Howden Hall, CaMa, and Liberton want improvements to transport by having more bus routes as well as improved cycle ways. The households within Mortonhall want more suitable/affordable housing and the protection of the green belt. The households within Gracemount would also like to have more opportunities for youths to engage positively.

The additional comments demonstrated that households would like to see improvements to the bin collection system as well as increased community policing. Having more local amenities was also identified as a priority as well as having enhanced communication about community events as well as the L&DCC.

Survey Impacts

The L&DCC are working to address the priorities raised by this survey. Please visit our website in order to stay up to date with the impacts of this survey: <https://libertondcc.wordpress.com/>

LIBERTON & DISTRICT COMMUNITY COUNCIL (LDCC) – LOCAL PEOPLE - HERE TO LISTEN AND TO HELP

Community Councils are a third and local tier of local government. Members on the Community Council are elected local people who give their time freely to deal with key community concerns that are important to others who live here too. We need to know what the priorities are in our community, and which ones are the most important to people, so that we can work effectively with others to address them.

Today we are asking you to tell us on this card what the views in your household are. Tick your answers. Rank them in order of importance. Then, tell us the age ranges of those in your household and your postcode too. This is so we can understand who in our community has given their views. When all the responses are collated, it will help us to know what things are important to people in our community.

Please complete below. **NO STAMP NEEDED**

COMMUNITY PRIORITIES IDENTIFIED BY LOCAL PEOPLE SO FAR These are not listed in any particular order	PLEASE TICK ALL THOSE IMPORTANT TO YOUR HOUSEHOLD. [Add any other ideas below too.]	RANK ALL YOU TICKED 1 = the highest importance 2 = the next, and so on
Increase social opportunities for people over 65		
Increase opportunities for youth to engage positively		
Increase awareness about domestic abuse		
Increase support for parents		
Do more in community gardens/parks/ 'green' activities		
Hold an annual Gala or Community Day for all to enjoy		
More direct bus routes to places around the city boundary		
Cycling - good links, more cycle ways, road safety for all		
Condition of roads, pavements, traffic levels, crossings		
Development of suitable / affordable housing to buy/rent		

AGE RANGES IN YOUR HOUSEHOLD ?	NUMBER OF PEOPLE IN EACH RANGE?
17 and under	
18 to 49	
50 to 64	
65 to 74	
75+	

POSTCODE

DID YOU KNOW?
The Community Council term begins anew in the autumn and you could stand in the Election to become one of its 12 members.

Will you stand in the election?
Or will you vote in it?
..... Think about it
It will help our community if you do.

Thank you for taking the time to think about our community and telling us your views on this card.

mail@libertondistrict.org.uk
www.libertondistrict.org.uk



Freepost Plus RTUL-XKXU-UZGU
Liberton & District Community Council
Local Priorities Survey
4 Park Crescent
Edinburgh
EH16 6JD

